

Marine GPS Chart Plotter

Model: XF-520、XF-608

Support XINUO-MAP & C-MAP (MAX) Card



XF-608

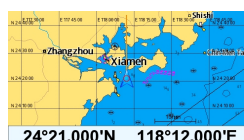


XF-520

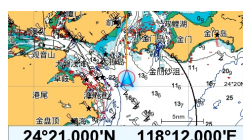
Features

- ▶ XF-520: 5" Color LCD with 480 x 272 resolution, high brightness and wide angle of view.
- ▶ XF-608: 7" Color LCD with 800 x 480 resolution, high brightness and wide angle of view.
- ▶ C-MAP (MAX) & XINUO-MAP dual chart systems for user to choose.
- ▶ Provide AIS input interfaces to connect with AIS device conveniently and display AIS targets dynamically on the chart.
- ▶ Multi-language support and six display modes options.
- ▶ Built-in global chart, upgrade XINUO chart regularly.
- ▶ Conform to IP65 water-proof standard.

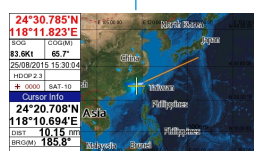
C-MAP



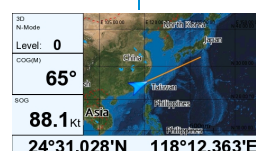
XINUO-MAP



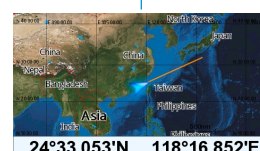
Six modes of display



Advanced Chart View



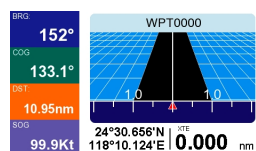
Standard Chart View



Simple Chart View



GPS Data



3D Navigation



Compass



C-MAP (MAX)
Fully satisfy customers' require of electronic chart.



Update XINUO-MAP regularly.

XF-520 / XF-608 SPECIFICATIONS

Display unit	XF-520	XF-608
Display Type	Color TFT LCD	
Display Size	5 inch	7 inch
Display Resolution	480 × 272 pixels (WQVGA)	800 × 480pixels (WVGA)
Display Brightness	400cd/m ²	500cd/m ²
Language	English, Simplified Chinese, Traditional Chinese, Vietnamese, Bahasa Malaysia, Turkish, Thai, Greek, Indonesian, Japanese, Korean	
Display Modes	Advanced Chart View, Standard Chart View, Simple Chart View, GPS Data, 3D Navigation, Compass	
Memory Capacity	10000 waypoints, 200 routes (100 points each route), 10000 marks, 200 boundary lines (40 points each line), 1500000 trackpoints	
Interface	NMEA 0183 Output 2 Ports, AIS Input 1 Ports	
Chart	C-MAP (MAX) & XINUO MAP	
Power Supply	DC12V-36 V	

Enviromental

Temperature	-15℃~+55℃
Waterproofing	IP65

GPS/WAAS

GPS Receiver	22 tracking/ 66 acquisition-channel GPS receiver Support multi-GNSS include QZSS, SBAS ranging WAAS/EGNOS/MSAS/GAGAN Support up to 210 PRN channels
Receive Frequency	L1 (1575.42 MHz)
Time to First Fix	Less than 39 seconds (Cold start)
Tracking Velocity	999 knots
Geodetic Systems	WGS-84 (and others)
ACCURACY	GPS Position: < 15 meters, 95% typical Velocity: 0.1 knot RMS steady state
	DGPS (WAAS) Position: < 3 meters, 95% typical Velocity: 0.1 knot RMS steady state

Standards

IEC 60945 :2002 EMC related items
ETSI EN 301 489-1V1.8.1 : 2008 EMC related items
IEC 60950-1:2006
ETSI EN 301 489-3 V1.4.1 : 2002 EMC related items
IEC 60529:2006 EMC related items
ETSI EN 300 440-2 V1.4.1:2010 Spurious related items
ETSI EN 300 440-1 V1.6.1:2010 Spurious related items

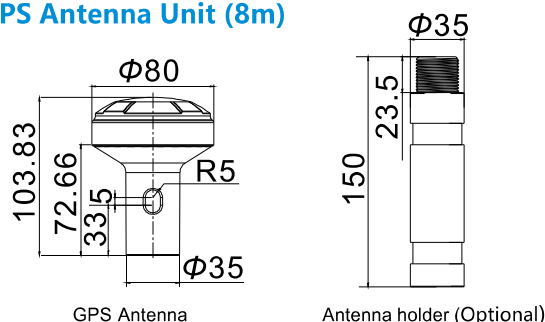
Packing List

Main Unit×1set	Data Cable with 6 pins plug×1 pc
Mounting Bracket×1pc	GPS Antenna×1 pc
Knob ×2 pcs	User's Manual ×1 pc
Power Cable ×1 pc	

Interface Definition

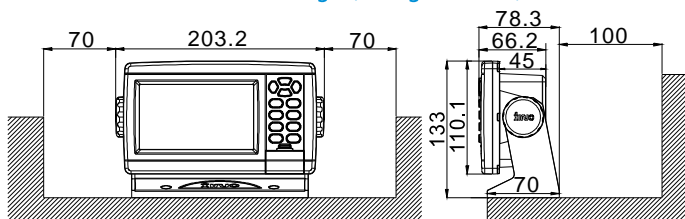


GPS Antenna Unit (8m)

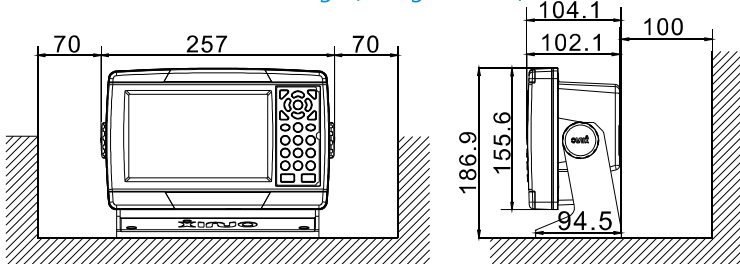


Main Unit

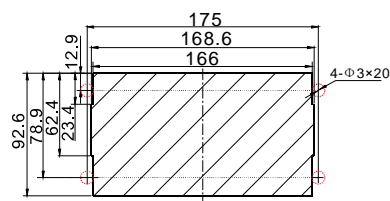
XF-520: Counter Mounting (0.6kg / 1.32lb)



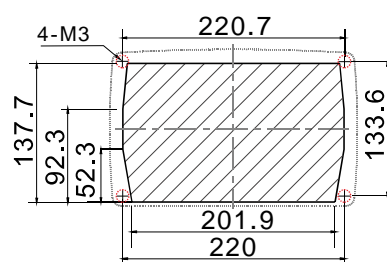
XF-608: Counter Mounting (1.3kg / 2.86lb)



XF-520: Flush Mounting (0.45kg / 0.99lb)



XF-608: Flush Mounting (1.1kg / 2.42lb)



[Unit:mm]



Dealer:



WWW.XINUO.COM
170215

Xinuo Information Technology (Xiamen) Corporation Limited