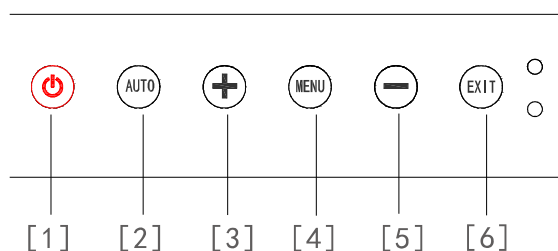


Marine LCD Monitor

Model: HM-2624



Keypad Functions



- [1] **[[POWER]] key:** To turn ON/OFF the monitor, but the core board still working.
- [2] **[[AUTO]] key:** Automatically adjust to the center display; or return to the previous menu.
- [3] **[[+]] key:** Press [[+]] to adjust the volume or choose the sub menu which one you want to set.
- [4] **[[MENU]] key:** See the details behind.
- [5] **[[−]] key:** Press [[−]] to adjust the volume or choose the sub menu which one you want to set.
- [6] **[[EXIT]] key:** Exit from current menu, or back to the previous menu.

Features

- ▶ 24 inch High brightness LED backlight , 1920X1080(WUXGA) resolution.
- ▶ Wide temperature range and wide angle of view.
- ▶ Support VGA 、 DVI、 HDMI interface.
- ▶ Adjust brightness by knob.
- ▶ Designed for Counter mounting and Flush mounting.



HM-2624 SPECIFICATIONS

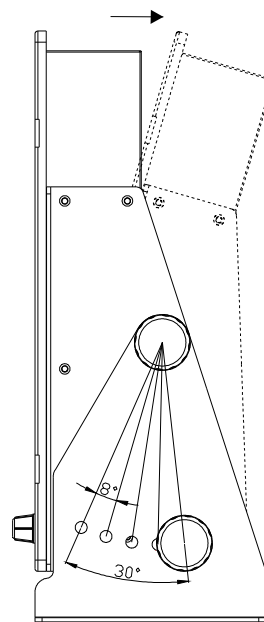
Display Unit	HM-2624
Display Type	Color TFT LCD
Screen Size	24 inch (531mmx299mm)
Display Resolution	1920 x 1080 (WUXGA) pixels
Colors	16.7M
Screen Brightness	600cd/m ²
Viewing Angle	Horizontal: 170 degree Vertical: 160 degree
Contrast Ratio	1000:1
Video Input	VGA ; DVI; HDMI
Operating Temperature	-15°C~+55°C
Storage Temperature	-20°C~+60°C
Power Supply	AC220 V
Compatible Resolution	1920*1080; 1920*1440; 1680*1050; 1366*768; 1280*720.....
Menu language	English, simplified Chinese, German, Italian French, Spanish, Portuguese, Korean
Standards	

IEC 60950-1:2006
 ETSI EN 301 489-3 V1.4.1 : 2002 EMC related items
 IEC 60529:2006 EMC related items
 ETSI EN 300 440-2 V1.4.1:2010 Spurious related items
 ETSI EN 300 440-1 V1.6.1:2010 Spurious related items

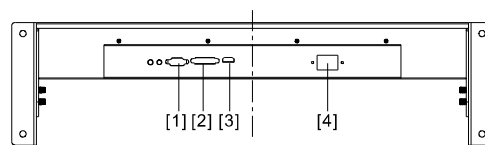
Packing List

Main Unit×1set	Power Cable ×1 pc
HDMI Cable ×1 pc	User's Manual ×1 pc
VGA Cable ×1 pc	Wood Screw ×4 pcs
Mounting Bracket×2pcs	
Mounting Bracket Screw (L) with 2pcs of rubber ring x 2 sets	
Mounting Bracket Screw (S) with 2pcs of rubber ring x 2 sets	

» Perspective Adjustment



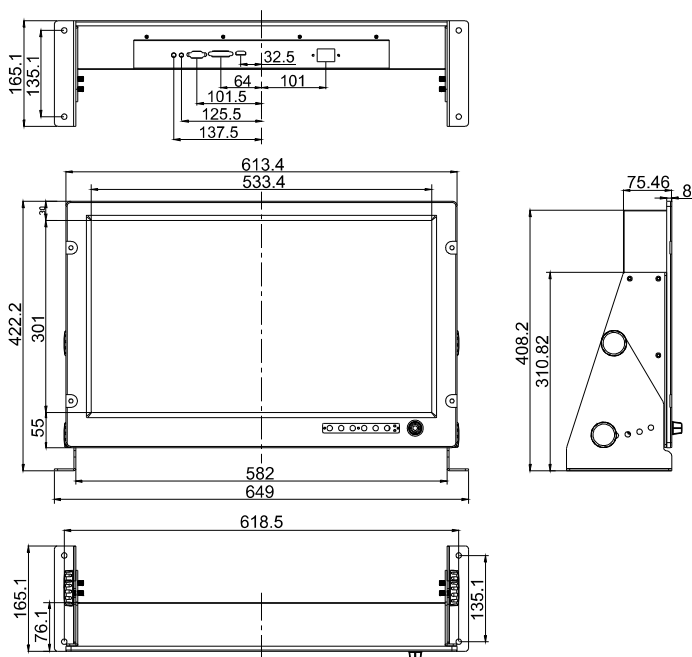
» Interface definition



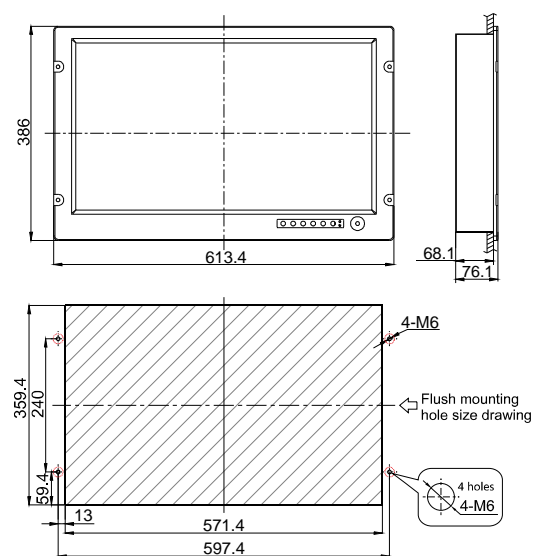
[1] VGA [2] DVI [3] HDMI [4] POWER

» Display Unit

Counter Mounting



Flush Mounting



[Unit: mm]



Dealer: