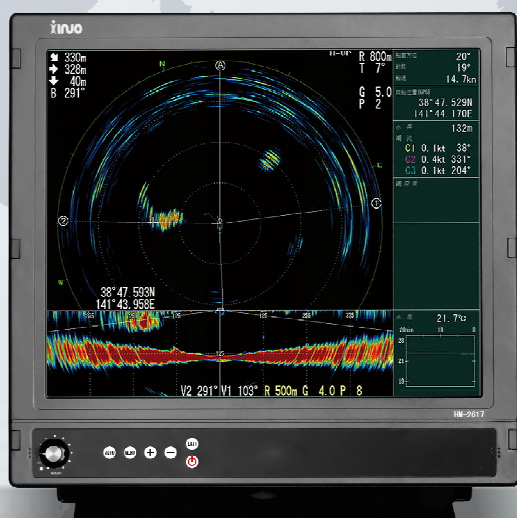
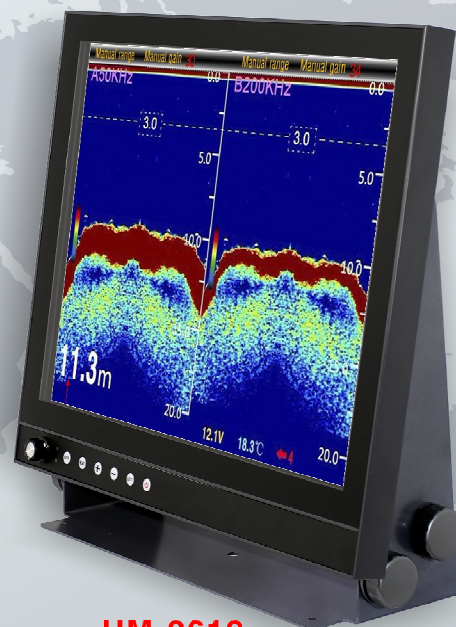


Marine LCD Monitor

Model: HM-2617/ HM-2619



HM-2617



HM-2619

Feature

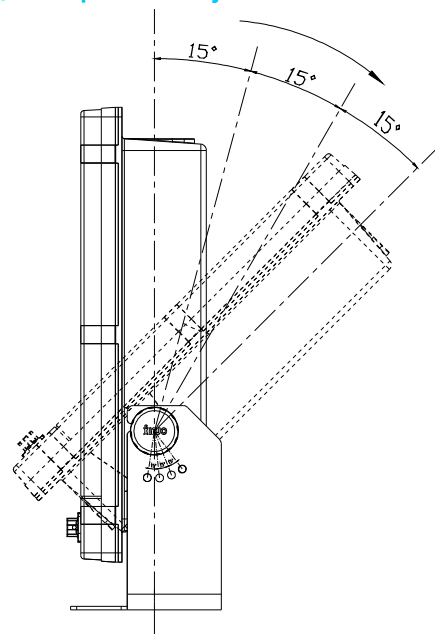
- ▶ 17"/19" color TFT LCD, 1280X1024(SXGA) resolution, LED backlight and wide angle of view.
- ▶ Visible under sunlight true color LCD (HM-2617 brightness: 550cd/m², HM-2619 brightness: 750cd/m²)
- ▶ Stepless backlight adjustment.
- ▶ Designed for flush mounting and bracket mounting.
- ▶ Waterproofing: IPX6.



HM-2617/HM-2619 SPECIFICATIONS

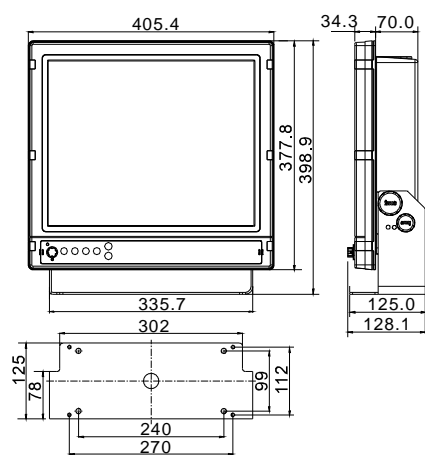
Display Unit	HM-2617	HM-2619
Screen Type	Color TFT LCD	
Screen Size	17 inches	19 inches
Screen Resolution	1280 x 1024 pixels (SXGA)	
Colors	16.7M	
Screen Brightness	550cd/m ²	750cd/m ²
Language	Chinese, English, French, German, Spanish, Italian, Japanese, Korean, Portuguese, Brazil Portuguese	
Viewing Angle	Horizontal: 170 degree Vertical: 160 degree	
Contrast Ratio	1000:1	
Video Input	VGA & DVI	
Compatible Resolution	640*480; 800*600; 1024*768; 1280*1024.....	
Temperature	-20°C~+60°C	
Power Supply	DC12V~36 V	

> Perspective Adjustment

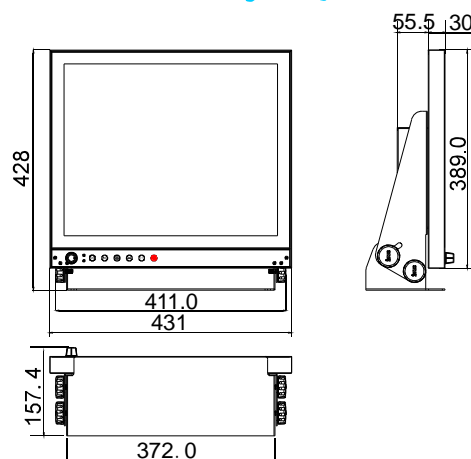


> Display Unit

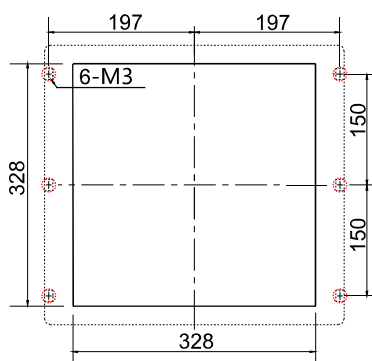
HM-2617 Counter Mounting (5.8kg / 12.79lb)



HM-2619 Counter Mounting (8kg / 17.6lb)



HM-2617 Flush Mounting (4.9kg / 10.8lb)



HM-2619 Flush Mounting (6.05kg / 13.3lb)

