

# 12" GPS Chart Plotter & Class B AIS Chart Plotter

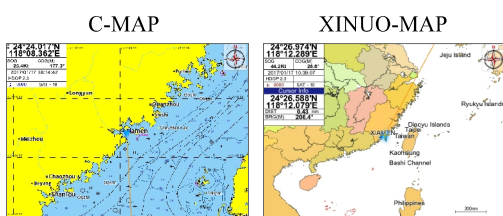
**Model: HM-5912N**

**Support XINUO-MAP & C-MAP (MAX) Card**



## Features

- ▶ 12.1" Color LCD with 800 x 600 resolution, high brightness and wide angle of view.
- ▶ C-MAP MAX & XINUO-MAP dual chart systems for user to choose.
- ▶ Fully support AIS function, display AIS targets dynamically on the chart.
- ▶ Multi-language support and six display modes options.
- ▶ Extenal speaker supporting improves user experience.
- ▶ Three indepent output ports and input ports work with different baud rate for 0183 singal.
- ▶ Built-in global chart, upgrade XINUO chart regularly .



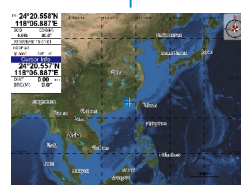
**C-MAP (MAX)**

Fully satisfy customers' requir of electronic chart.

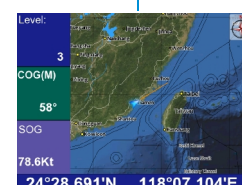


Update XINUO-MAP regularly.

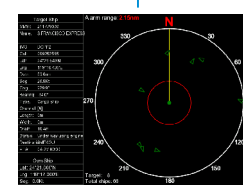
## Six modes of display



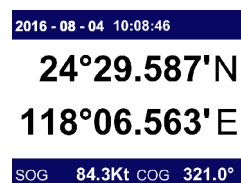
Standard Chart View



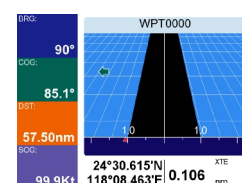
Simple Chart View



AIS Data



GPS Data



3D Navigation



Compass

# HM-5912N SPECIFICATIONS

## Display unit

Display Type	Color TFT LCD
Display Size	12.1 inch
Display Resolution	800 × 600 pixels (SVGA)
Display Brightness	500cd/m <sup>2</sup>
Language	English, Simplified Chinese, Traditional Chinese, Vietnamese, Bahasa Malaysia, Turkish, Thai, Greek, Indonesian, Japanese, Korean, Arabic, Persian
Display Modes	Standard Chart View, Simple Chart View, AIS Data, GPS Data, 3D Navigation, Compass
Memory Capacity	10000 waypoints, 200 routes, 10000 marks, one route can indicate 1000000 waypoints
Interface	AIS Output 1 Ports, 0183 Output 2 Ports, 0183 Input 3 Ports (Mutual independent, Baud rate can be set independently)
Chart	C-MAP (MAX) & XINUO MAP
Power Supply	DC12V-36 V

## Environmental

working temperature	-15°C~+55°C
Storage temperature	-20°C ~ +60°C
Waterproofing	IPX6

## AIS Class B transceiver

Frequency	156.025MHz ~ 162.025MHz
Bandwidth	25kHz
Modulation	GMSK / FM
Data Rate	9,600 bps
Number of AIS transmitter	1
Number of AIS Receiver	2 (Contains A and B channels)
AIS Channel A	CH87B(161.975MHz)
AIS Channel B	CH88B(162.025MHz)
Output Power	2 W
Rx Sensivity	< -107 dBm @ 20% PER

## Standards

IEC 62287-1 Ed. 2, 2010; IEC 61108-1 Ed. 1, 2003  
IEC 61162-1 Ed. 3, 2007; ITU-R M.1371-4, 2010

IEC 60945 :2002 EMC related items  
ETSI EN 301 489-1V1.8.1 : 2008 EMC related items

IEC 60950-1:2006  
ETSI EN 301 489-3 V1.4.1 : 2002 EMC related items

IEC 60529:2006 EMC related items  
ETSI EN 300 440-2 V1.4.1:2010 Spurious related items  
ETSI EN 300 440-1 V1.6.1:2010 Spurious related items

## GPS Performance

GPS Receiver	22 tracking channels/ 66 receiving channels Support WAAS/EGNOS/MSAS/GAGAN	
Receive Frequency	L1 (1575.42 MHz)	
Time to First Fix	Less than 39 seconds (Cold start)	
Tracking Velocity	999 knots	
Coordinate Systems	WGS-84 (and others)	
Accuracy	GPS	Position: < 15 meters, 95% typical Velocity: 0.1knot RMS steady state
	DGPS (USCG/RTCM)	Position: 3~5 meters, 95% typical Velocity: 0.1 knot RMS steady state
	DGPS (WAAS)	Position: <3 meters, 95% typical Velocity: 0.1 knot RMS steady state

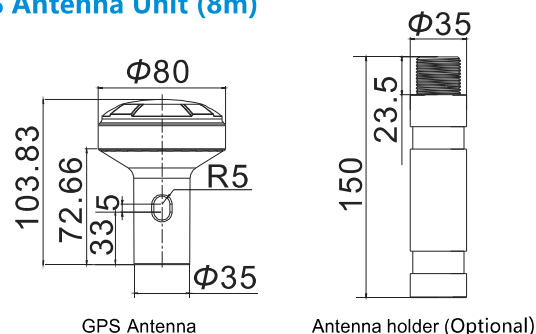
## Packing List

Main Unit×1set	Keyboard ×1pc
Mounting Bracket×1pc	Data Cable with 6 pins plug×1 pc
Knob ×2 pcs	Data Cable with 8 pins plug×1 pc
Power Cable ×1 pc	GPS Antenna×1 pc
Optional: VHF Antenna×1 pc	User's Manual ×1 pc

## Interface Definition

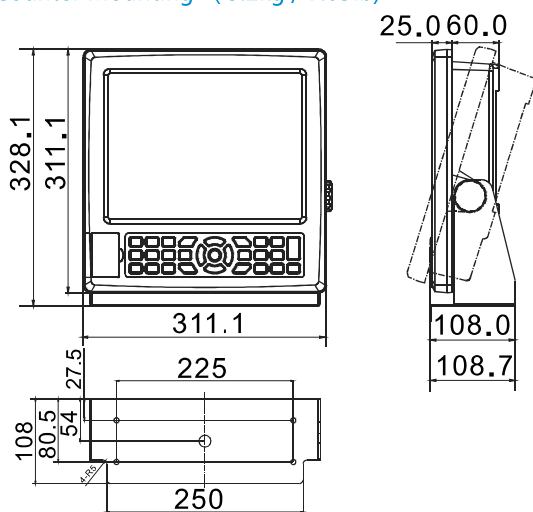


## GPS Antenna Unit (8m)

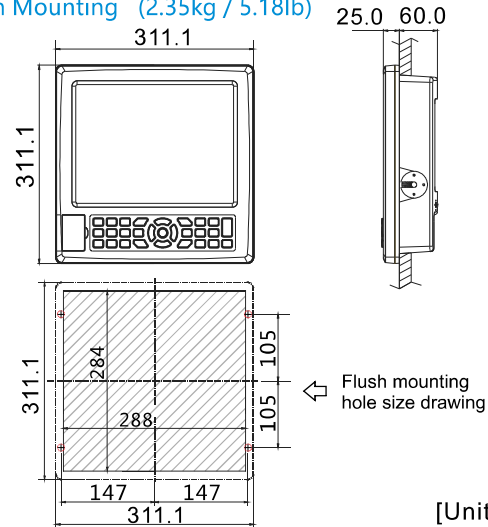


## Main Unit

### Counter Mounting (3.2kg / 7.05lb)



### Flush Mounting (2.35kg / 5.18lb)



[Unit:mm]



Dealer:



WWW.XINUO.COM  
1702 V1.0

Xinuo Information Technology (Xiamen) Corporation Limited